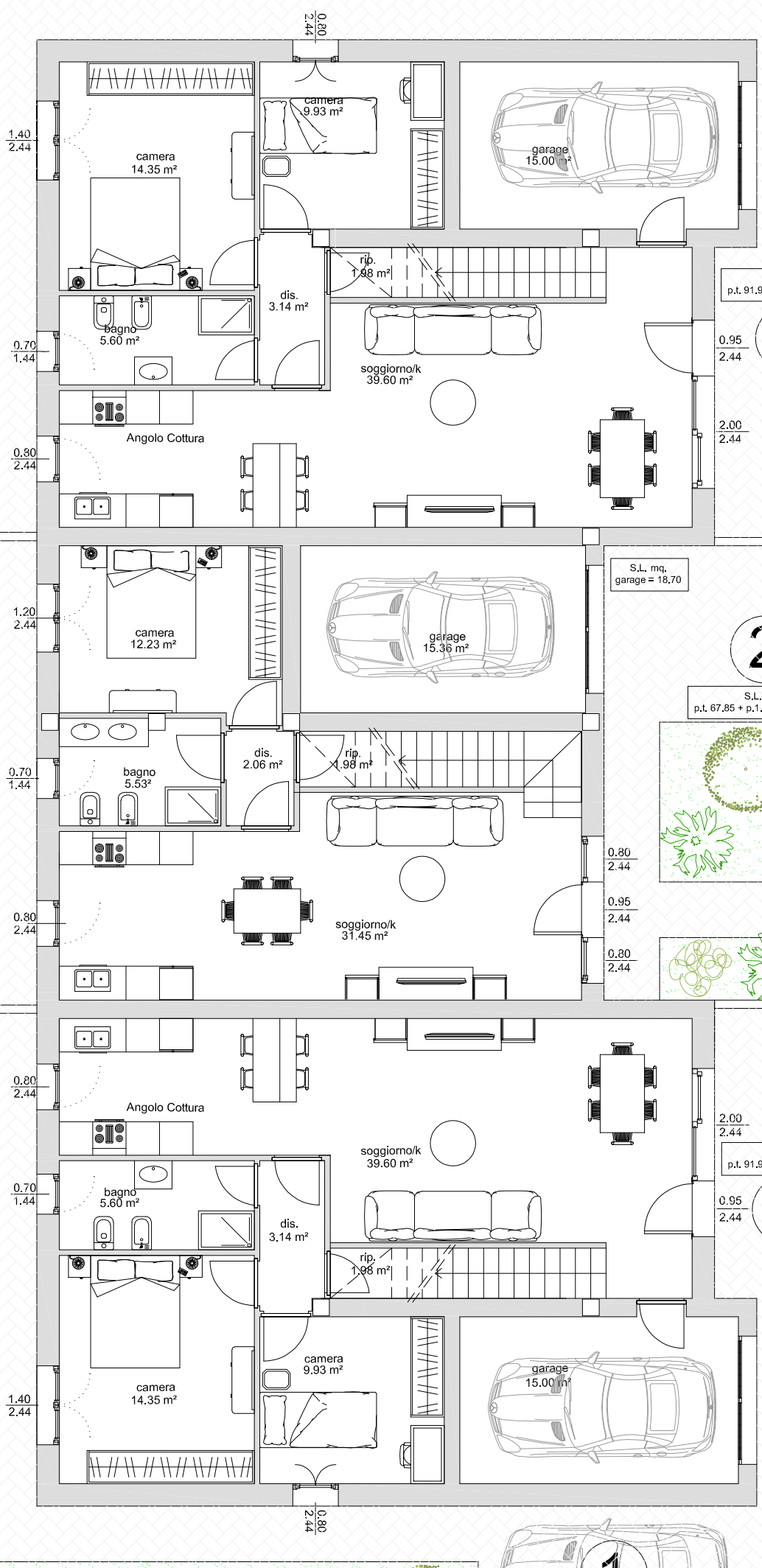


187.47 m²

80.78 m²

146.92 m²



S.L. mq.
garage = 19,57

S.L. mq.
p.t. 91,97 + p.t. 30,93 = 122,90

3

S.L. mq.
garage = 18,70

2

S.L. mq.
p.t. 67,85 + p.t. 45,23 = 113,08

0.80
2.44
0.95
2.44
0.80
2.44

2.00
2.44

S.L. mq.
p.t. 91,97 + p.t. 30,93 = 122,90

1

S.L. mq.
garage = 19,57

